

EXCLUSIVE FIXED PRICE PACKAGE

Fairmontfirst



*Renders for illustration purposes only

LOT 253 BACCA DRIVE
ANGLE VALE (THE ENTRANCE)



Simple, smart & more affordable.

For almost 60 years, Fairmont Homes have helped thousands of South Australian's get into their first home. Now with Fairmont First, we bring you a simpler, smarter and more affordable journey to new home ownership.

This home is an exciting new fixed price opportunity brought to you by Fairmont First at *The Entrance*. We've created this brand new range that maximises affordability, but doesn't sacrifice quality.

Streamlined processes coupled with stylish home design means you get the absolute best value.

All homes feature fixed facades and the opportunity to choose one of four carefully curated internal colour schemes.

All homes are provided as a fixed price house and land package, meaning that buying has never been easier.





You've arrived at the entrance.

Located within The Entrance, Angle Vale and offers a wonderful lifestyle in a vibrant new community.

The Entrance is a beautiful, master-planned estate that embraces up to 10 hectares of open land and vineyards. Once part of the Virgara Family Estate, the space is simply beautiful, and the natural gumtree and vineyard lined entrance is magnificent... so magnificent, it inspired the name.

Incorporating 750 spacious allotments dotted with parks, reserves and walking trails, The Entrance is a safe, family friendly environment where people can connect and socialise. And, of course, Virgara Wines is literally next door, with its highly regarded Sneaky's Restaurant for lovers of Italian food...

Angle Vale has transformed into a modern, vibrant community with a real sense of identity. It's well connected to local amenities, around the corner from the community sporting centre and within walking distance of Angle Vale Primary School, two early learning childcare centres, the Angle Vale Tavern and a number of local shops and businesses. In 2022, the new super school Riverbanks College opened its doors and will eventually accommodate students from B-12.

Public transport is available with Hail N Ride bus stops nearby and the Munno Para railway station, just a 5-minute drive. And, of course, The Barossa, Clare Valley and Yorke Peninsula are not far away.

Masterplan






Neighbouring the Virgara Winery, The Entrance offers a wonderful lifestyle in a vibrant community.

Your new home with Fairmont First is ideally located within the Orchard Release. A short walk from the stunning vineyards of Virgara Wines & Sneaky's restaurant.

THE
ENTRANCE
ANGLE VALE

Lot 253 Bacca Drive

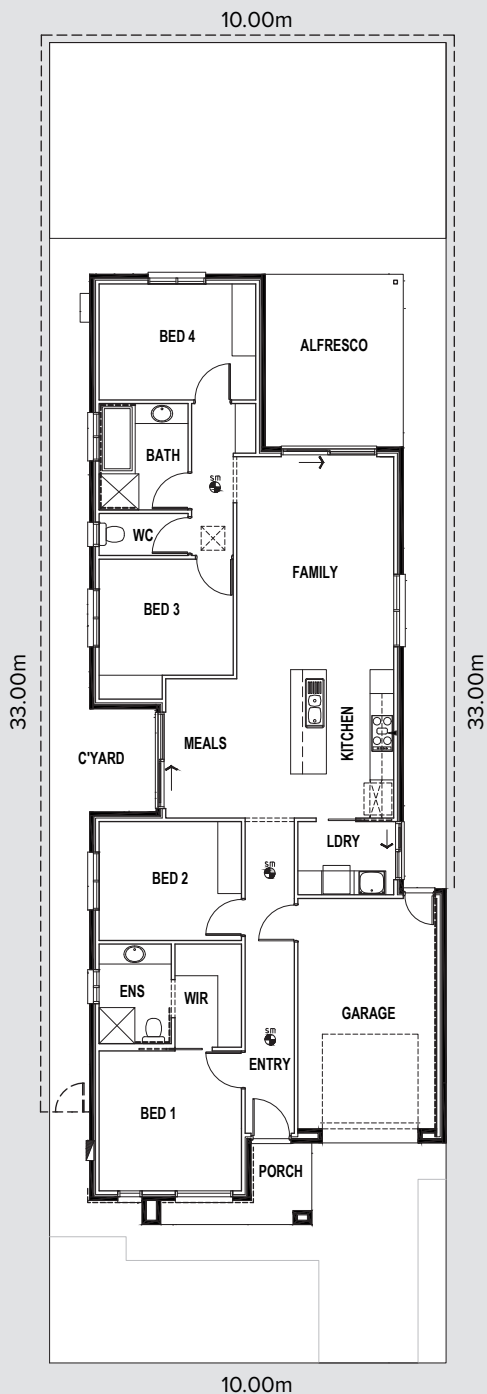
Design: Sage Mk2

 4
  2
  1
  1

Living	141.94m ²
Portico	4.77m ²
Alfresco	15.03m ²
Garage	23.13m ²
Total Residence	184.87m²



*Brick and render may be applied differently on final product to adhere to encumbrances. Please speak with your consultant for more information.



Features

- Ready-to-build with titled land
- 6.6kW solar
- 2700mm ceilings
- Zoned reverse cycle air conditioning
- Fixed site costs

All dimensions and room sizes are approximate and may not be to scale. Plans and elevations are for illustration purposes only.

Carefully crafted by our design consultants
to bring your new home to life!



Select your interior colour scheme

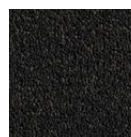
Each of our contemporary, timeless interior colour schemes features a selection of neutral colours, materials and finishes to make styling your new home as effortless as possible. This home offers the opportunity to select from four interior colour schemes.



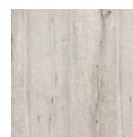
Chic

A sophisticated, monochromatic concept, offering timeless elegance.

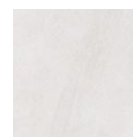
FLOORING



Savanna
Coolibah



Camel
Oak Greige



Jakarta
White Matt

KITCHEN

Benchtop	Lavistone Ice Sand 20mm
Splashback	Plain White Subway 100x300 Horizontal Stack Lay with Ultrawhite Grout
Lower cupboards (inc fridge and pantry)	Laminex Terril Natural
Overhead cupboards	Laminex Calm White Natural
Joinery handle	Livorno Matt black - No handles to overhead cupboards

BATHROOMS

Benchtop	Polytec Chambord Matt
Cupboard	Polytec Artisan Oak Matt - Vertical
Floor tiles	Jakarta White Matt 300 x 300 with Misty Grey grout
Wall tiles	Jakarta White Matt 300 x 300 stackbond with Misty Grey grout
Joinery handle	Livorno Matt Black

LAUNDRY

Benchtop	Polytec Chambord Matt
Cupboards	Polytec Artisan Oak Matt - Vertical
Floor tiles	Jakarta White Matt 300 x 300 with Misty Grey grout
Wall tiles	Jakarta White Matt 300 x 300 stackbond with Misty Grey grout
Joinery handle	Livorno Dull Brushed Nickel

GENERAL

Internal wall paint	Wattyl Feather Dawn
Main floor	Clix 7mm Camel Oak Greige
Carpet	EC Savanna Coolibah



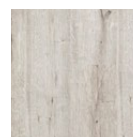
Urban

Strong and contemporary, with a balance of modern lines and materials, embracing elements of inner city living.

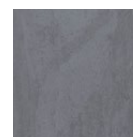
FLOORING



Compass
Pitch



Old Oak Grey
Brushed



Matang Mid
Grey Matt

KITCHEN

Benchtop	Stone Ambassador Zenith - Platinum Black 20mm
Splashback	Grey Undulated Subway 75x300 Horizontal Stack Lay with Misty Grey Grout
Lower cupboards (inc fridge and pantry)	Polytec Stone Grey Matt
Overhead cupboards	Polytec Stone Grey Matt
Joinery handle	Dallas Dull Brushed Nickel - no handles to overhead cupboards

BATHROOMS

Benchtop	Laminex Grigio Grafite Natural
Cupboard	Laminex Battalion Natural
Floor tiles	Matang Mid Grey Matt 300x300 with Slate Grey Grout
Wall tiles	Plain White Matt 300x400, horizontal stack bond with Ultrawhite grout
Joinery handle	Livorno Dull Brushed Nickel

LAUNDRY

Benchtop	Laminex Grigio Grafite Natural
Cupboards	Laminex Battalion Natural
Floor tiles	Matang Mid Grey Matt 300x300 with Slate Grey Grout
Wall tiles	Plain White Matt 300x400, horizontal stack bond with Ultrawhite grout
Joinery handle	Livorno Dull Brushed Nickel

GENERAL

Internal wall paint	Watty! Floral White
Main floor	Clix 7mm Old Oak Grey Brushed
Carpet	Quest Compass Pitch



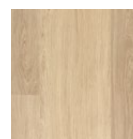
Coastal

Light, bright, natural materials and a warm harmonic colour palette evoking the calm and breeziness of the beach.

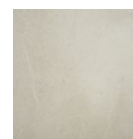
FLOORING



Summit Point
Feathertop



Classic Oak
White Varnished



Kempsey
Sabbia Matt

KITCHEN

Benchtop	Lavistone - Ice Sand 20mm
Splashback	Cream Undulated Subway 75x300 Horizontal Stack Lay with Misty Grey Grout
Lower cupboards (inc fridge and pantry)	Polytec Classic White Matt
Overhead cupboards	Polytec Classic White Matt
Joinery handle	Dallas Dull Brushed Nickel - no handles to overhead cupboards

BATHROOMS

Benchtop	Formica Autumn Oak Velour (Laminate)
Cupboard	Polytec Classic White Matt
Floor tiles	Kempsey Sabbia Matt 300x300 with Mudberry Grout
Wall tiles	Plain White Matt 300x400, horizontal stack bond with Ultrawhite grout
Joinery handle	Dallas Dull Brushed Nickel

LAUNDRY

Benchtop	Formica Autumn Oak Velour (Laminate)
Cupboards	Polytec Classic White Matt
Floor tiles	Kempsey Sabbia Matt 300x300 with Mudberry Grout
Wall tiles	Plain White Matt 300x400, horizontal stack bond with Ultrawhite grout
Joinery handle	Dallas Dull Brushed Nickel

GENERAL

Internal wall paint	Watty! Slightly
Main floor	Clix 7mm Classic Oak White Varnished
Carpet	EC Summit Point Feathertop



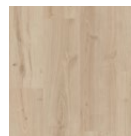
Scandinavian

A minimalist and restrained warm colour palette with a focus on clean simple lines and functionality.

FLOORING



Compass
Maverick



Montana Oak
Light Beige



Kempsey
White

KITCHEN

Benchtop	Stone Ambassador Zenith - Sugar Rush 20mm
Splashback	White Undulated Subway 75x300 Horizontal Stack Lay with Ultra White Grout
Lower cupboards (inc fridge and pantry)	Laminex Ghostgum Natural
Overhead cupboards	Laminex Ghostgum Natural
Joinery handle	Dallas Chrome - no handles to overhead cupboards

BATHROOMS

Benchtop	Laminex Carrara Delicata Natural
Cupboard	Wilsonart Landmark Wood Xtreme Matt - Vertical
Floor tiles	Kempsey White Matt 300x300 with Misty Grey grout
Wall tiles	Plain White Gloss 300x400, horizontal stack bond with Ultrawhite grout
Joinery handle	Dallas Chrome

LAUNDRY

Benchtop	Formica Autumn Oak Velour (Laminate)
Cupboards	Polytec Classic White Matt
Floor tiles	Kempsey Sabbia Matt 300x300 with Mudberry Grout
Wall tiles	Plain White Matt 300x400, horizontal stack bond with Ultrawhite grout
Joinery handle	Dallas Dull Brushed Nickel

GENERAL

Internal wall paint	Wattyl Feather Dawn
Main floor	Clix 7mm Montanna Oak Light Beige
Carpet	Quest Compass Maverick



Fairmont First is designed to make the process easier, faster and more affordable.

Inclusions

Each home includes a high standard of inclusions, leaving nothing more to be desired. With a fixed price build, purchasing has never been easier.

GENERAL

Solar	6.6KW System - No battery
Ceiling height	2700mm
Internal linings	10mm Boral sheetrock plasterboard
Entrance doors	Corinthian Madison PMAD 104 with Translucent Glass
Other external doors	Corinthian Flush Panel
External hardware	Angular Trilock Entrance Leverset Satin Chrome to entrance door. Tristan Entrance Leverset Satin Chrome to other external doors.
Internal doors	Corinthian Painted Redicote Flush Panel doors
Internal door hardware	Brushed Stainless Steel Tristan Lever
Insulation	Internal Walls: R2.0, External Walls: R2.5 Thermocoustic, Ceiling: R5.0
Skirtings	67x18mm MDF Bevel Profile
Window architraves	67x18mm MDF Bevel Profile
Paint system	Matt acrylic, 2 coat system
Built in robes	Framed Mirror Doors
Electrical	Hard wired smoke detectors with battery backup, meter isolator & 6ka circuit breaker and earth leakage safety switch to meter box.
Lighting	Downlights throughout (excluding garage and side eaves)
NBN provision	600 Series Hub, lockable enclosure, splitter for TV data, patch panel, ethernet and phone hub, wiring provision for phone (x2), data point (x2), internet lead-in cable (cat 6).
Hot water service	Rheem gas continuous flow 26 litre
Air-conditioning	Zoned ducted reverse cycle air conditioning
Garage auto panel lift door	Automated Sectional Door with two remote controls, Madison profile
Soil removal	By builder

EXTERNAL

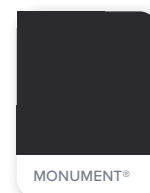
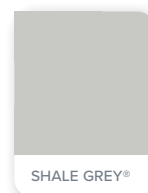
Storm

Dark, moody hues inspired by the elements of winter storm clouds.

Render	Colorbond Shale Grey
Roof	Colorbond Shale Grey
Gutters	Colorbond Shale Grey
Fascias	Colorbond Monument
Bricks	PGH Nightfall Midnight
Mortar	Natural Grey
Garage door	Colorbond Monument
Front door	Colorbond Shale Grey
Windows	Monument
Porch tile	Black Textured 300x300mm



Storm



EXCLUSIONS

Paving, paths & driveway	Not included
Clothesline & letterbox	Not included
Fencing & gates	Not included. Fence colour must be Colourbond Monument
Landscaped garden	Not included
Rainwater tank	Not included - must be installed within 12 months of occupancy
Stormwater	Not included

KITCHEN



Phoenix Pina Sink Mixer*



Westinghouse 900mm Gas Cooktop



Westinghouse 900mm Electric Oven



Westinghouse 900mm Slideout Rangehood



Westinghouse Dishwasher

ITEM	SPECIFICATION
Sink	Seima Leto 750 Undermount Sink, 2 bowls
Sink mixer	Phoenix Pina Sink Mixer 200mm Gooseneck, Chrome
Cooktop	Westinghouse 900mm Gas Cooktop
Oven	Westinghouse 900mm Multi-function Electric Oven
Rangehood	Westinghouse 900mm Slideout Rangehood
Dishwasher	Westinghouse Dishwasher

BATHROOM



Semi frameless shower screen*



Seima Chios Close Coupled Toilet Suite



Phoenix Pina Wall Mixer & Vivid High-Rise Shower Arm



Phoenix Radii accessories incl. shower shelf, double towel rail & toilet roll holder*



Seima Kyra 017 Square Basin

ITEM	SPECIFICATION
Basin	Seima Kyra 017 Square Ceramic Basin (Inset to main bathroom/semi recessed to ensuite)
Bath	Seima Syros Inset Bath
Tapware	Phoenix Pina Basin Mixer, Pina Wall Mixers, Pina Bath Outlet, Vivid High-Rise Shower Arm, Chrome
Accessories	Phoenix Radii Accessories incl. 600mm Double Towel Rail Round Plate, Toilet Roll Holder Round Plate, Metal Shower Shelf Round Plate, Chrome
Shower screen	600 Series Semi Frameless - Clear Glass, Polished Silver
Toilet suite	Seima Chios Close Coupled Toilet
Floor grate	Square Grate 80mm Stainless Steel
Mirrors	Mirror Full With of Vanity 750mm H x 4mm polished edge, over all vanity units (where applicable)
Fan	Exhaust fan to ensuite - heat lamp to main bathroom
Tiling	2000mm high tiling, excluding sperate w/c / vanity - half skirt tile and 300mm high above vanity where applicable

LAUNDRY

ITEM	SPECIFICATION
Laundry sink	Acero classic 45 litre laundry sink
Sink mixer	Phoenix Ivy Sink Mixer, Chrome

Fairmont *first*

Fairmont Homes Group Pty Ltd
19 Fullarton Rd, Kent Town SA 5067
Ph: 08 8112 3112 fairmonthomes.com.au

RLA 274625. Fairmont Homes Builder's Licence No. 188013. Details correct at time of publishing. All information subject to the approval from the City of Playford Council. Development plan shown is for indicative purposes only, please refer to final plans held by council. The Information in this marketing brochure, including photographs, artist impressions, illustrations, floor plans, site plans and measurements, are indicative or approximate only, and can be subject to change without notice. 18799